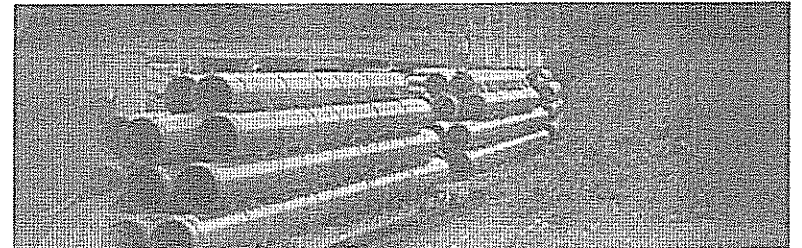
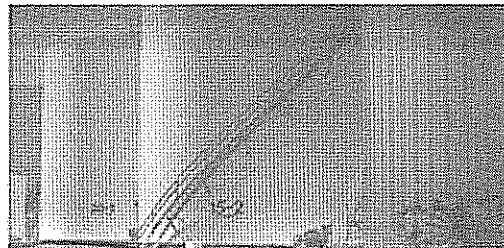
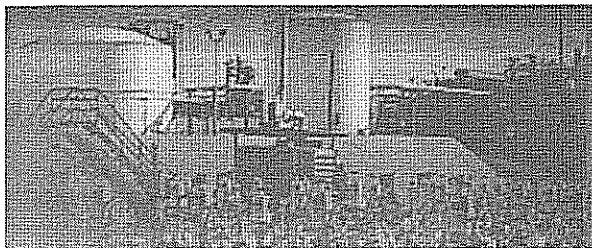


A Different Kind of
ENERGY COMPANY

KINDER  MORGAN

Northeast Energy Direct Project

Brookline, New Hampshire

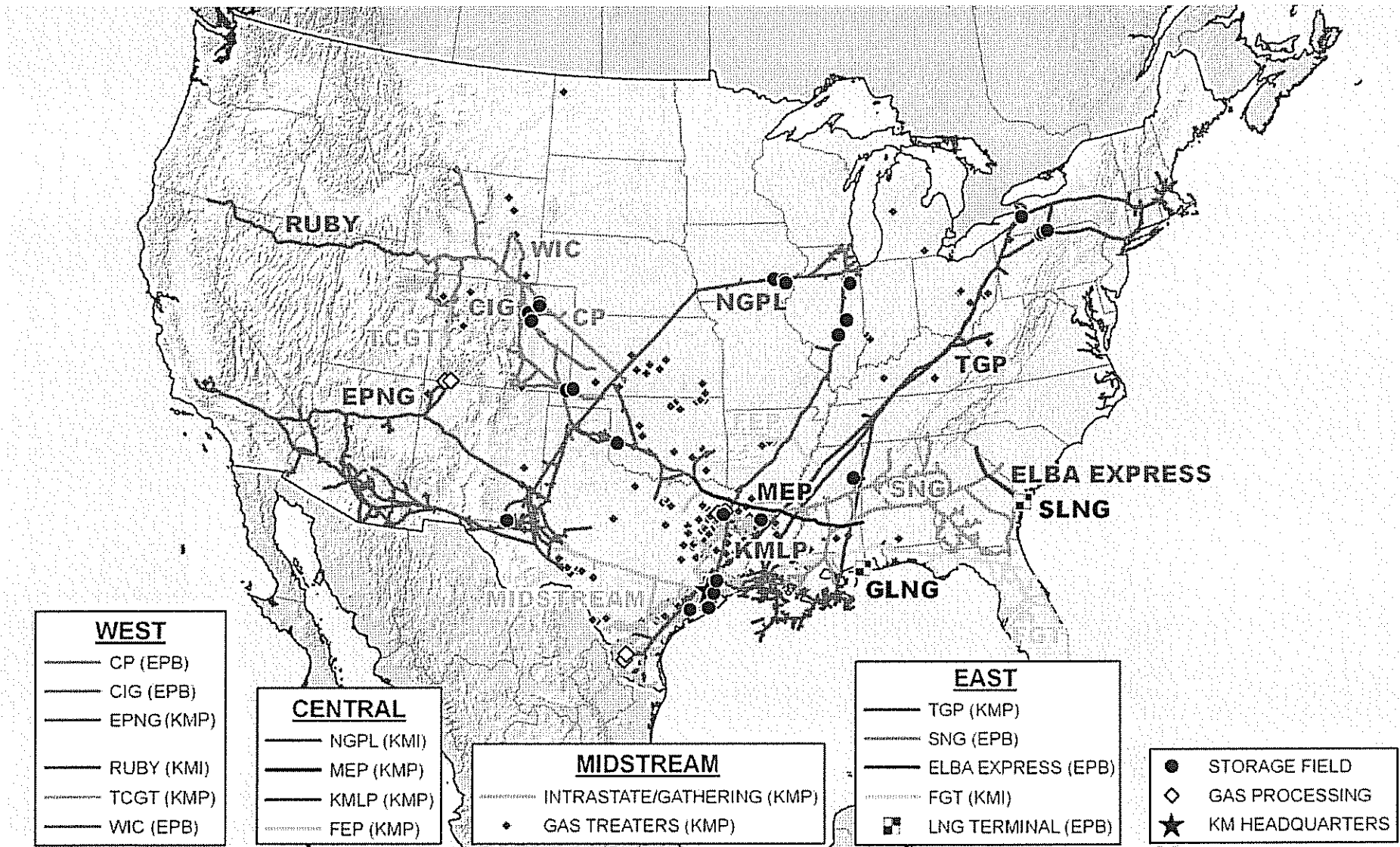


About Kinder Morgan



- Kinder Morgan is one of the largest, most experienced energy companies in North America. We own an interest in or operate approximately 80,000 miles of pipelines and 180 terminals.
- Kinder Morgan employs approximately 11,500 people throughout the United States and Canada.
- We are committed to operating our assets in a safe, ethical and transparent manner.
- We ensure public safety and safe pipeline operations through employee training, regular testing, right-of-way aerial and foot patrols and adherence to our comprehensive Integrity Management plan and procedures.
- Kinder Morgan does not have a Political Action Committee (PAC), or make any political contributions.

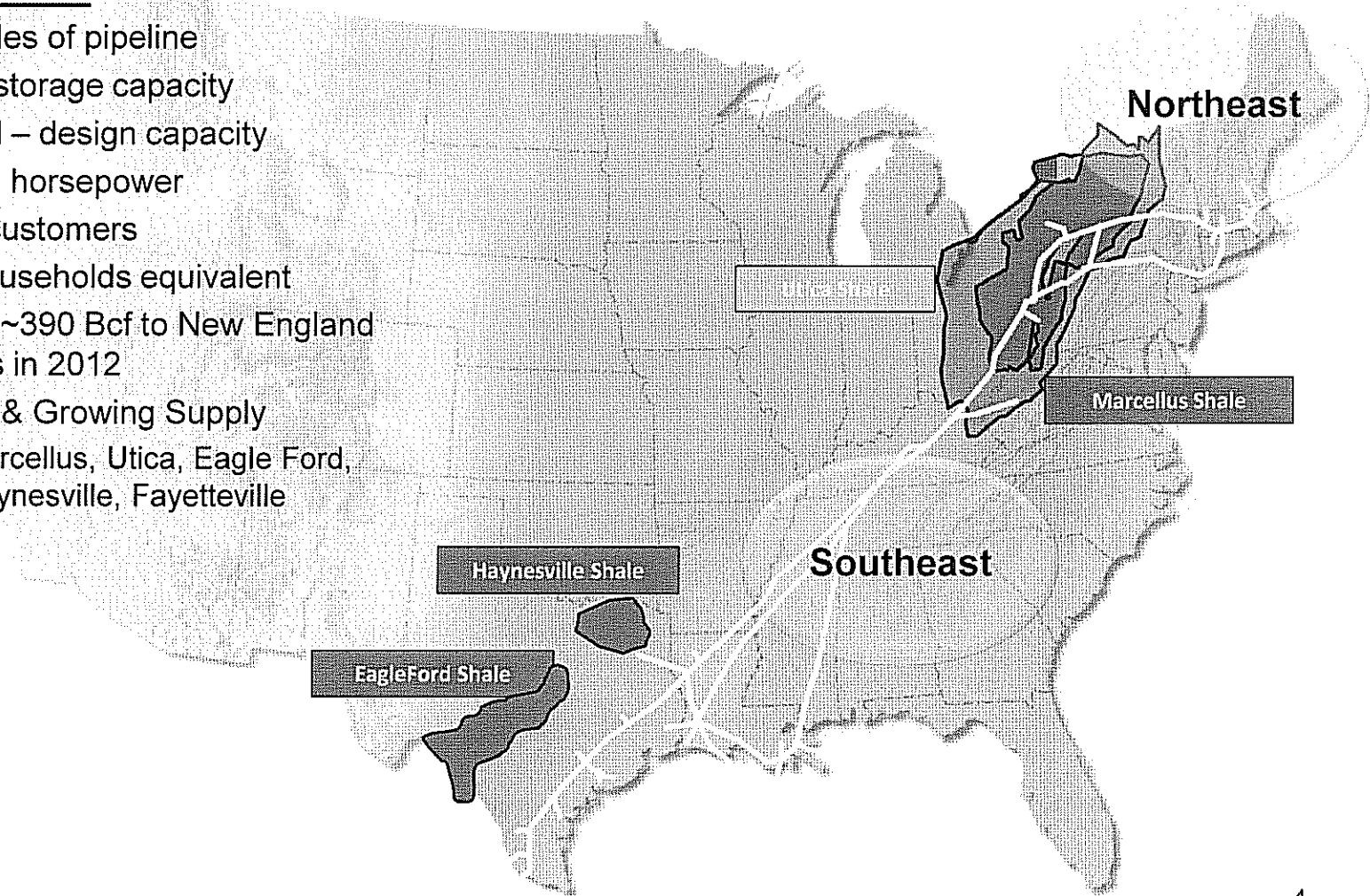
Kinder Morgan's Natural Gas Pipelines



Tennessee Gas Pipeline

System Overview

- 11,900 miles of pipeline
- 79 Bcf of storage capacity
- ~8.0 Bcf/d – design capacity
- 1.4 million horsepower
- >500 FT customers
- 35 MM households equivalent
- Delivered ~390 Bcf to New England customers in 2012
- Abundant & Growing Supply
 - Marcellus, Utica, Eagle Ford, Haynesville, Fayetteville



TGP's Existing Shippers in New England

New England LDC Customers

- Liberty Utilities
- EnergyNorth Natural Gas (NH)
- Northern Utilities (ME)
- Fitchburg Gas & Electric Light Co. (MA)
- Colonial Gas Co. (MA)
- Essex County Gas Co. (MA)
- Boston Gas Co. (MA)
- NSTAR Gas Co. (MA)
- Bay State Gas Co. aka Columbia Gas of MA (MA)
- Blackstone Gas Co. (MA, Municipal)
- Narragansett Electric Co. d/b/a National Grid (RI)
- Holyoke Gas & Electric (MA, Municipal)
- Westfield Gas & Electric Dept. (MA, Municipal)
- Berkshire Gas Co. (MA)
- Connecticut Natural Gas Co. (CT)
- Southern Connecticut Gas Co. (CT)
- Yankee Gas Services Co. (CT)

New England Power Generators

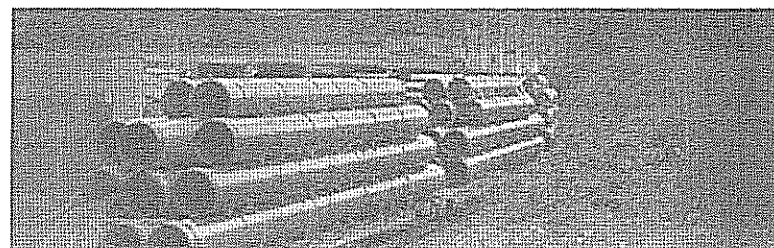
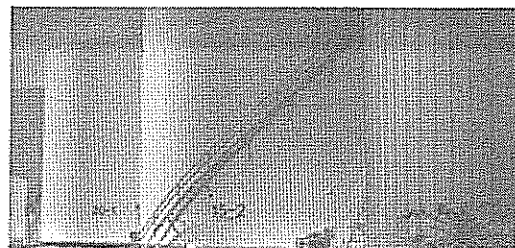
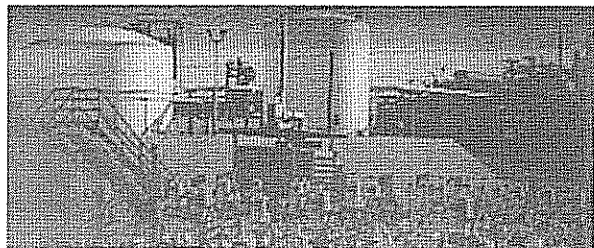
- Granite Ridge LLC (NH)
- Entergy RISE
- Blackstone GDFSUEZ

A Different Kind of
ENERGY COMPANY

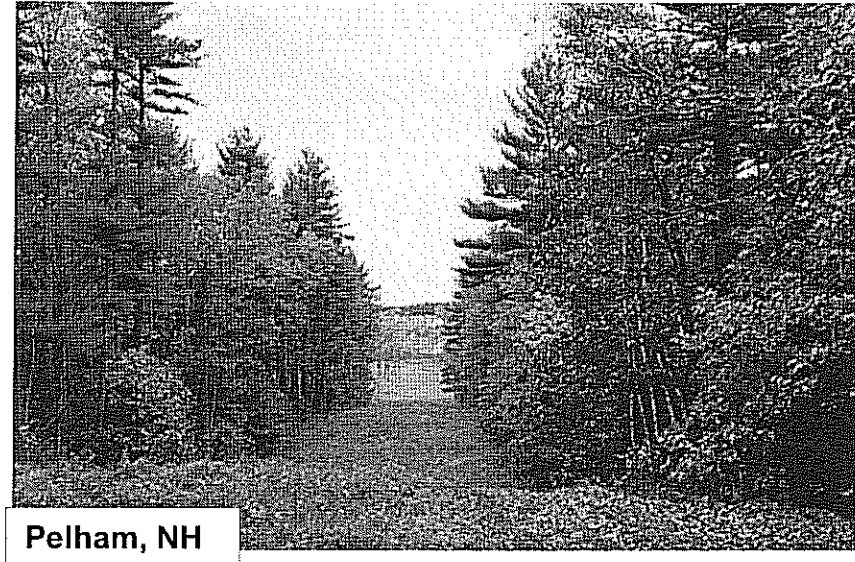
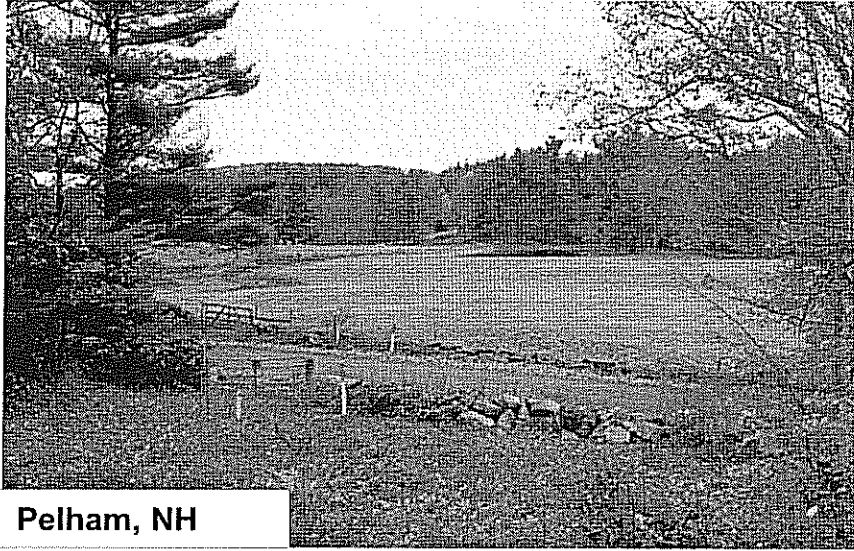


NEW HAMPSHIRE

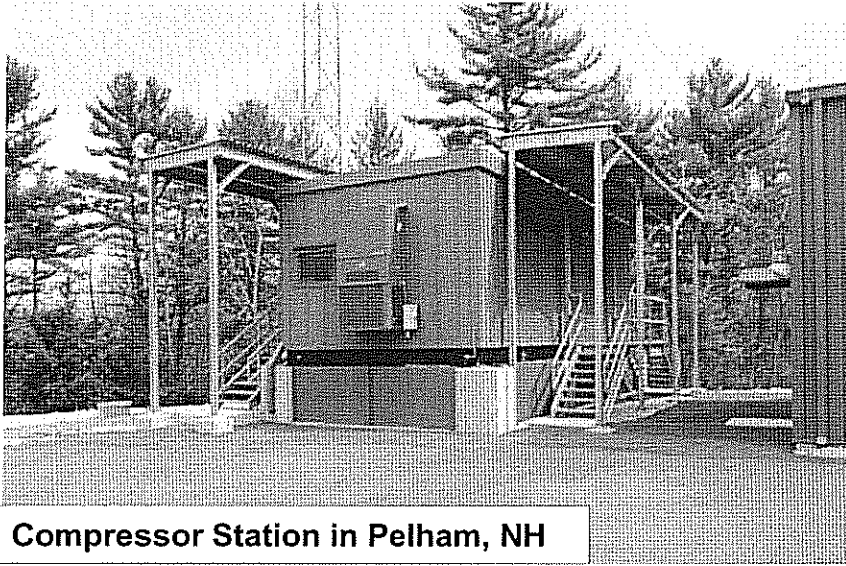
KINDER  **MORGAN**



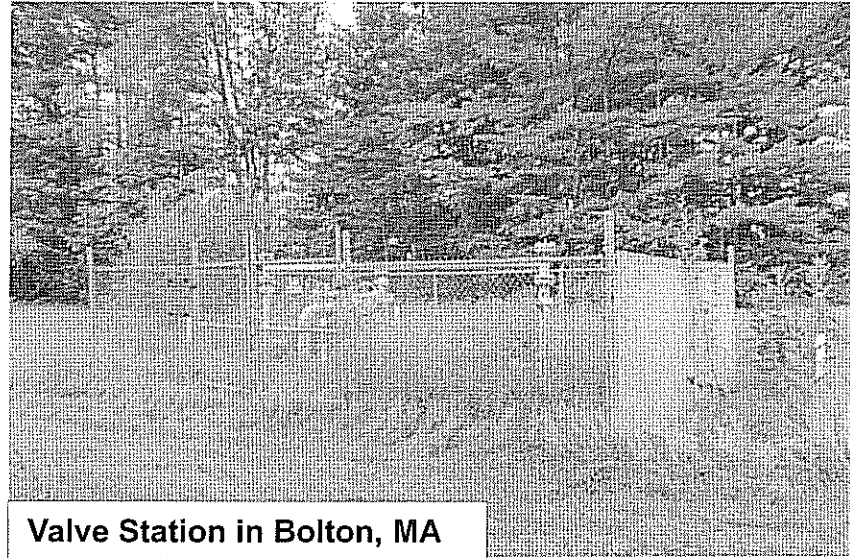
Existing Rights-of-Way in New Hampshire



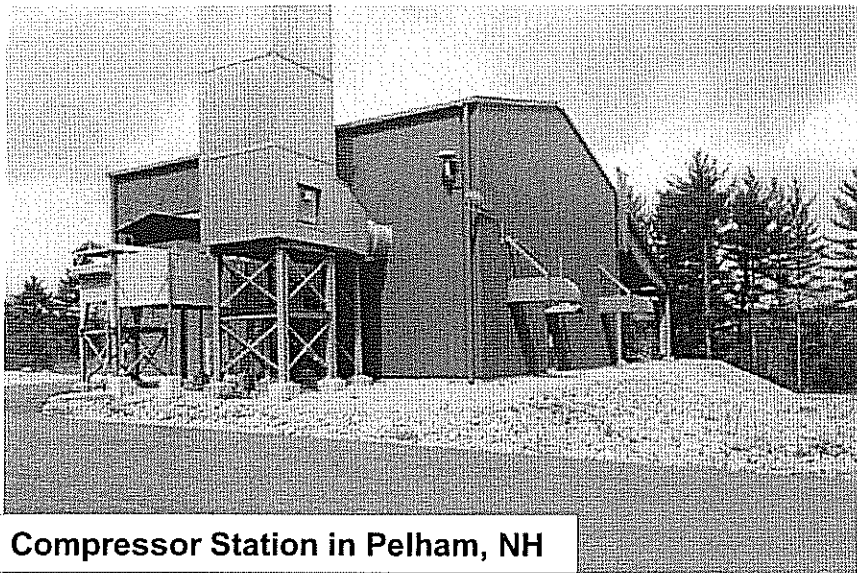
Existing Valve, Meter & Compressor Stations in the Northeast



Compressor Station in Pelham, NH



Valve Station in Bolton, MA



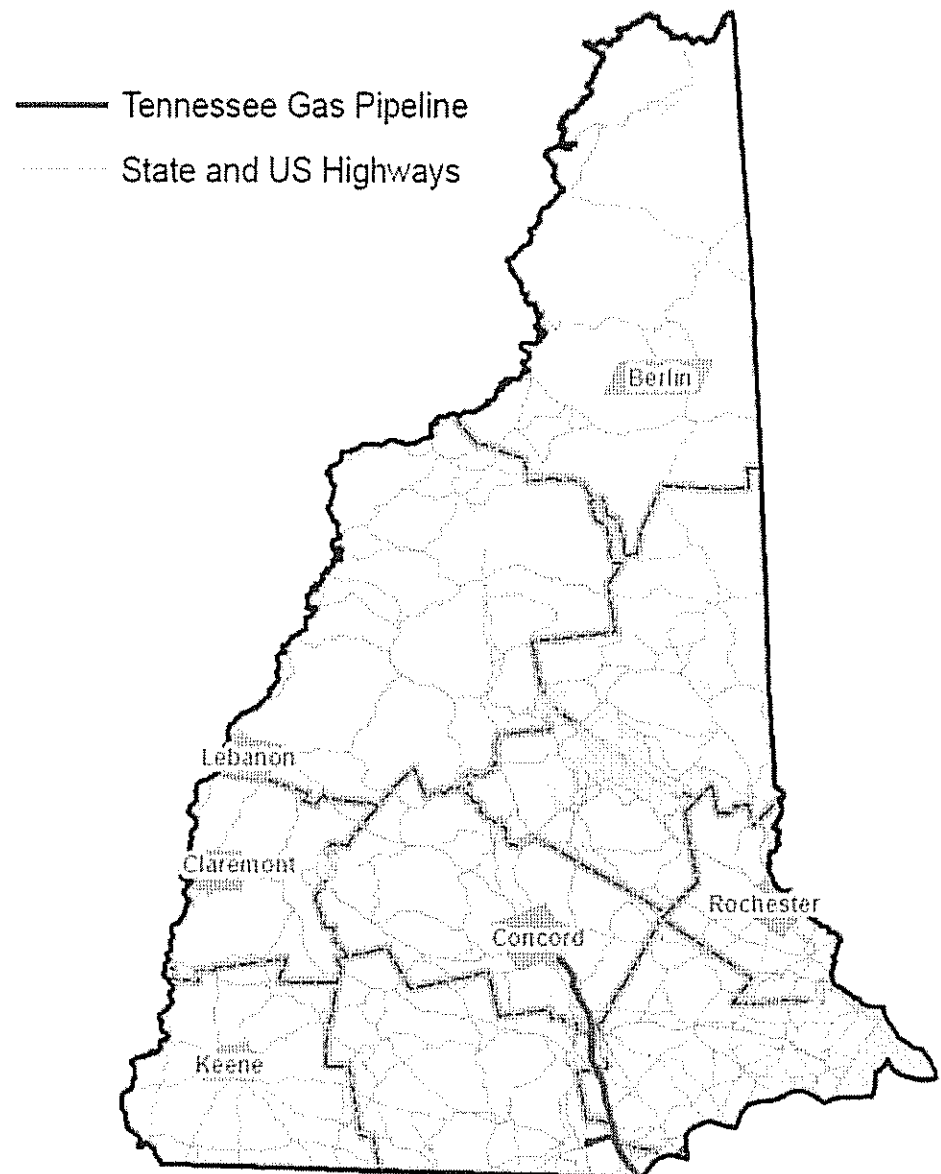
Compressor Station in Pelham, NH



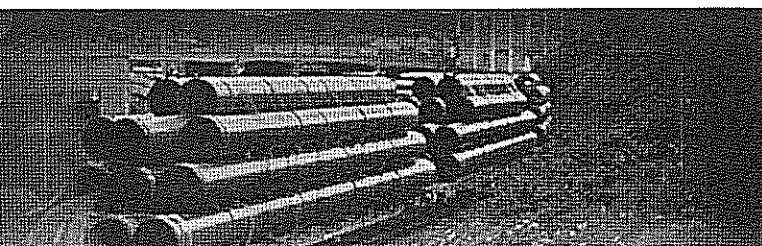
Meter Station in Schodack, NY

In New Hampshire,

- Kinder Morgan operates approximately **50 miles** of pipeline
- In 2014, Kinder Morgan paid approximately **\$1.7 million** to state and local taxing bodies.
- Kinder Morgan owns or operates assets in Hillsborough, Rockingham and Merrimack Counties
- Kinder Morgan has provided natural gas to New Hampshire for over **60** years.

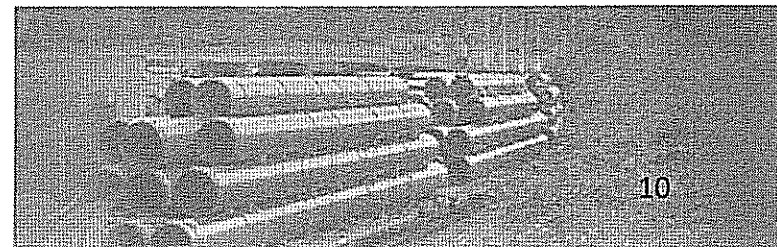
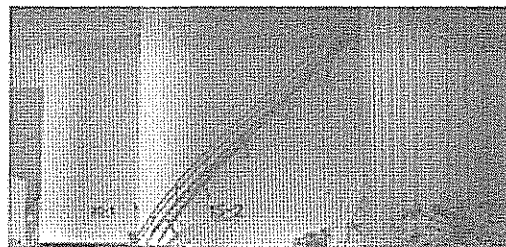
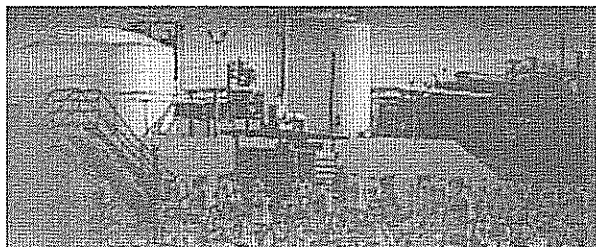


A Different Kind of
ENERGY COMPANY



The Need for the Northeast Energy Direct Project

KINDER  MORGAN



Natural Gas Demand in New England

New England's Gas Needs:

- In 2013, New England relied on natural gas for **52%** of its electricity produced, more than any other source. (Source: ISO-NE)
- Tennessee Gas Pipeline and Algonquin Gas Pipeline are the two major pipelines transporting natural gas to New England. (Source: U.S. Energy Information Administration)

"In New England, increasing pressure on an already-constrained natural gas infrastructure is our most pressing and urgent challenge... New England's pipeline infrastructure is inadequate to serve demand by local distribution companies (for home heating) and power generators in the winter period. This constraint has led to significant electric reliability challenges."

- Gordon van Welie, President and CEO of ISO-NE.

Current Supply:

- Competitive Energy Services (CES) estimates that New England currently has the capacity to import **2.7 Bcf/d** on existing pipelines (not including Canadian imports, LNG and proposed new pipelines.)

Current and Future Needs:

- Natural gas demand for heating and industrial processes in New England can exceed **4.5 Bcf/d** on the coldest winter days. This does **NOT** include the needs of the electric system.

KM Confirms Anchor Shippers



Kinder Morgan Confirms Anchor Shippers for Northeast Energy Direct Project

Thursday, March 5, 2015 10:01 am EST

HOUSTON--(BUSINESS WIRE)--Kinder Morgan, Inc. (NYSE: KMI) today announced that its subsidiary, Tennessee Gas Pipeline Company (TGP), has finalized its anchor shippers for the market path component of the proposed Northeast Energy Direct Project (NED) following the formal close of the anchor shipper period in February. Collectively, the anchor shippers have executed agreements to transport approximately 500,000 dekatherms per day (Dth/d) of incremental natural gas supplies sourced from the prolific Marcellus Shale region to meet New England's growing consumer and industrial gas needs, as well as helping to bolster electric reliability. NED's market path component, from Wright, New York, to Dracut, Massachusetts, and beyond, is scalable to 1.2 billion cubic feet per day (Bcf/d), or ultimately 2.2 Bcf/d. A project in-service date of November 2018 is planned.

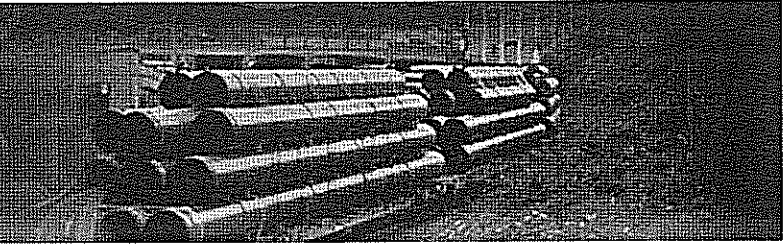
Anchor shippers that have executed binding precedent agreements include: National Grid, 186,963 Dth/d; Liberty Utilities, 115,000 Dth/d; Columbia Gas of Massachusetts, 114,300 Dth/d; and Connecticut Natural Gas Corporation, Southern Connecticut Gas Corporation, The Berkshire Gas Company, The City of Westfield Gas & Electric Light Department and others. TGP is continuing to negotiate with potential shippers on the NED Project, including electric distribution companies (EDCs) and others, and expects to announce additional commitments at a later date.

On March 5, 2015, Kinder Morgan announced it had reached agreement with key local natural gas distribution companies (“LDCs”) throughout New England to transport approximately 500,000 Dth/d of long-term firm transportation on the Northeast Energy Direct Project route.

These LDC's include;

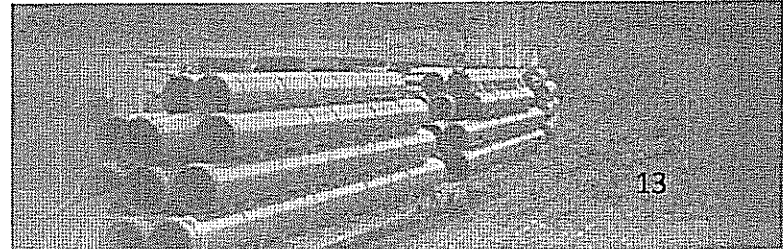
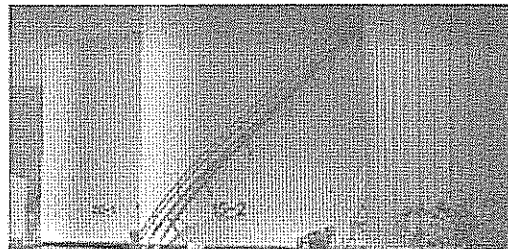
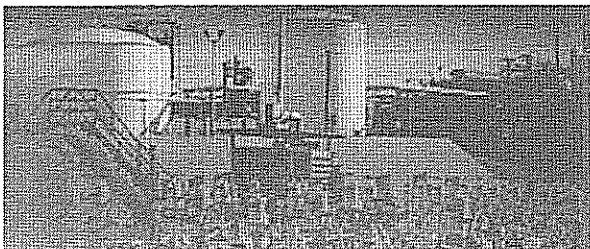
- National Grid (186,963 Dth/d)
- Liberty Utilities (115,000 Dth/d)
- Columbia Gas of Mass. (114,300 Dth/d)
- Connecticut Natural Gas Corporation
- Southern Connecticut Gas Corporation
- Berkshire Gas Company
- The City of Westfield Gas & Electric Light Department

A Different Kind of
ENERGY COMPANY



Northeast Energy Direct Project Introduction

KINDER  MORGAN



Northeast Energy Direct Project Overview

- The Northeast Energy Direct Project will expand the existing Tennessee Gas Pipeline system within Pennsylvania, New York, Massachusetts, New Hampshire and Connecticut.
- The expansion will help meet increased demand in the U.S. Northeast for transportation capacity for natural gas.
- Following completion, the proposed project could bring an estimated increased capacity of up to 2.2 Bcf/d to the Northeast, which is equivalent to an additional 1.5MM households.
- The pre-filing process allows for open and transparent interaction between FERC Staff and stakeholders regarding the Project before the formal certificate application is filed, and is intended for early identification and resolution of environmental and other important issues. During pre-filing, TGP will file detailed draft environmental resource reports with FERC for review and comment.
- FERC Docket #: PF14-22-000

Estimated Project Schedule

Action	Timing
Outreach Meetings	Ongoing
Route Selection and Permit Preparation	Ongoing
Agency Consultations	Ongoing
Filed for FERC Pre-Filing	Sept. 15, 2014
Participate in FERC Pre-filing Process (including filing of draft resource reports)	4 th Quarter 2014 to 4 th Quarter 2015
File Certificate Application with FERC	4 th Quarter 2015
Anticipated FERC Approval	4 th Quarter 2016
Proposed Start of Construction Activity	January 2017
Proposed In-Service	November 2018

Regulatory Oversight

Federal, state and local agencies will have extensive regulatory authority over the proposed project. Some of these include:

Federal

- Federal Energy Regulatory Commission
- U.S. Army Corps of Engineers - New England District
- U.S. Environmental Protection Agency
- U.S. Fish and Wildlife Service
- U.S. Department of Agriculture
- U.S. Department of the Interior - National Park Service
- U.S. Bureau of Land Management

State

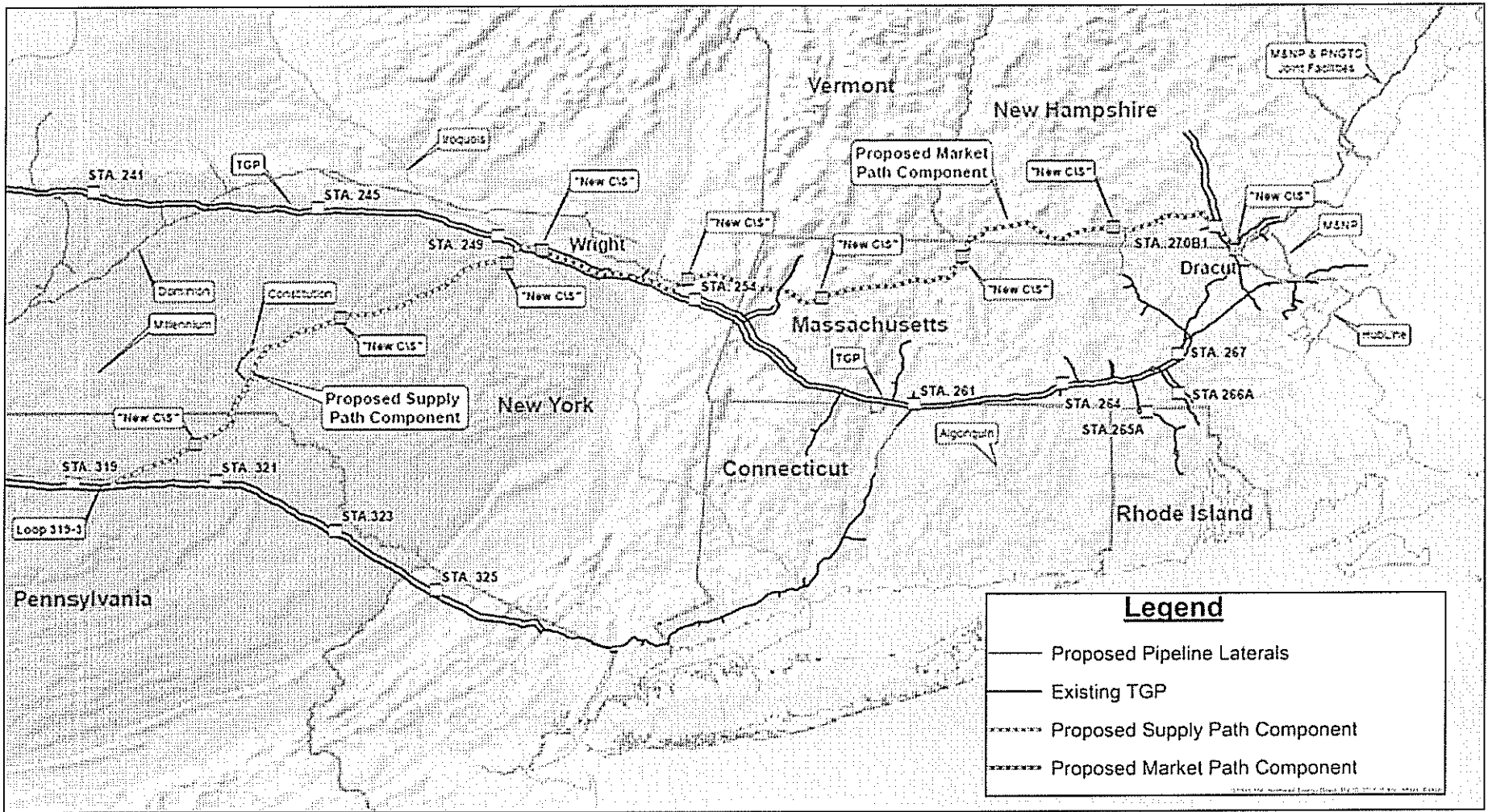
- New Hampshire Department of Environmental Services
- New Hampshire Fish and Game Department
- New Hampshire Division of Historical Resources
- New Hampshire Division of Forests and Lands
- New Hampshire Site Evaluation Committee

Local

- New Hampshire Town Conservations Commissions

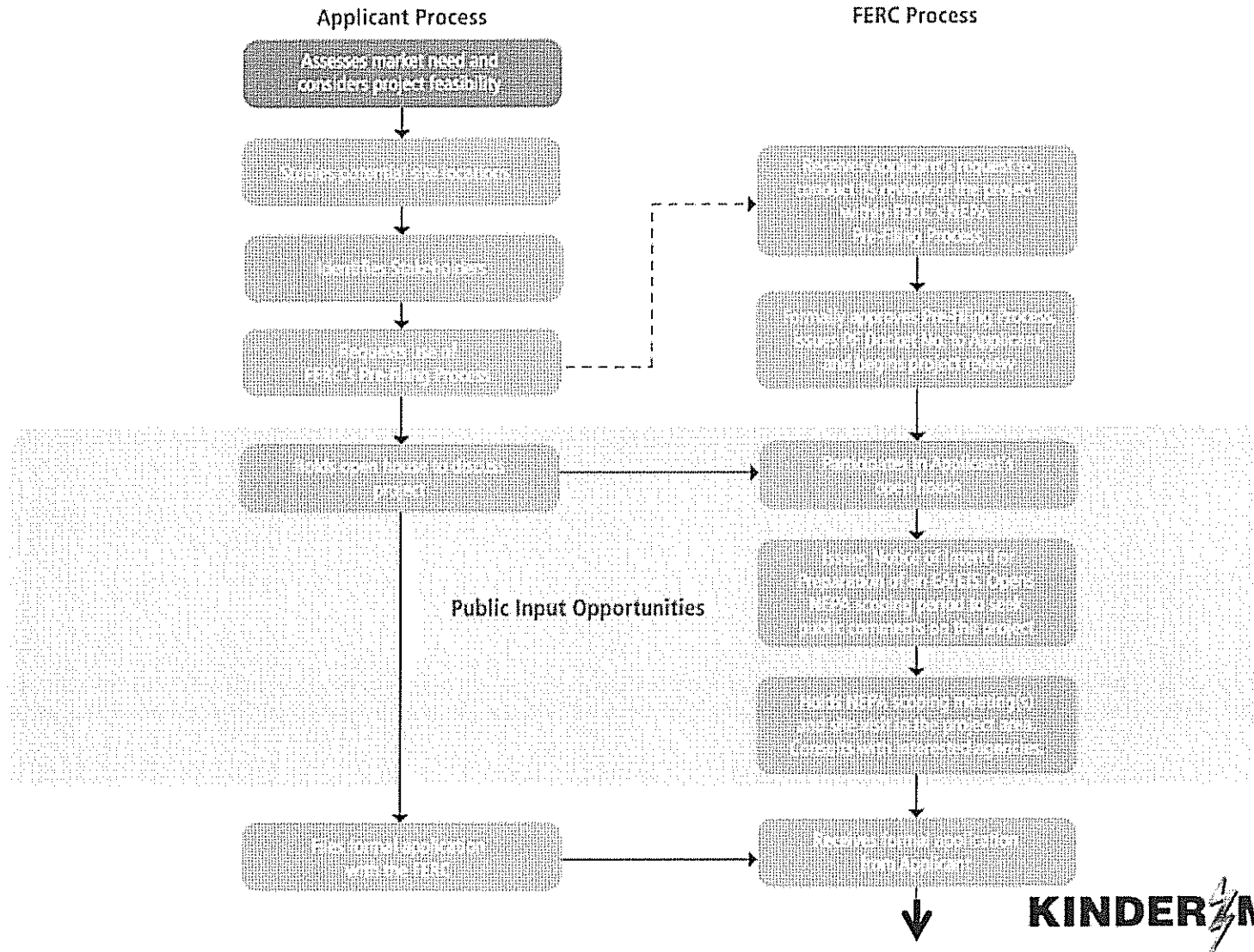


Proposed Northeast Energy Direct Route

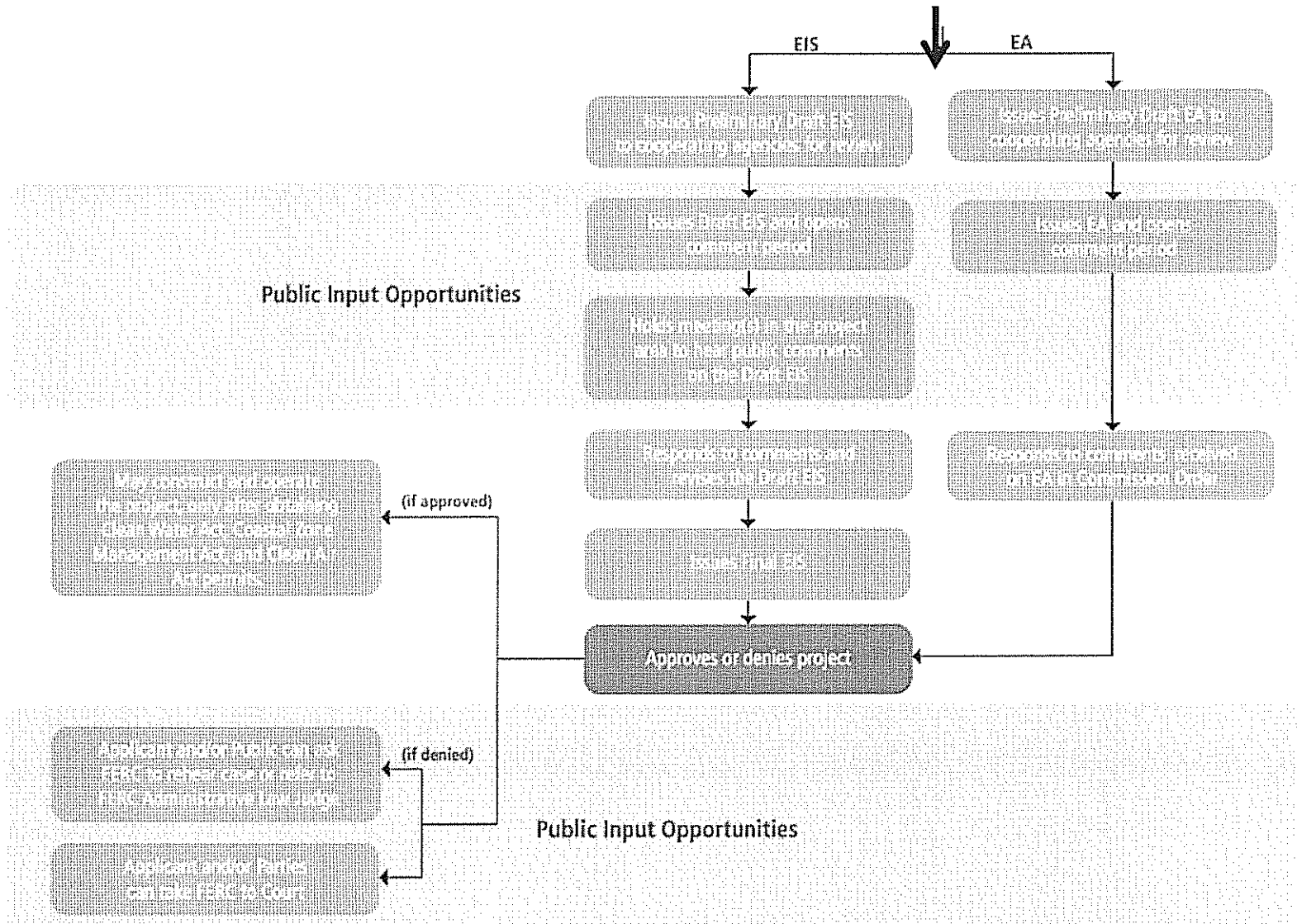


The FERC Review Process (part 1)

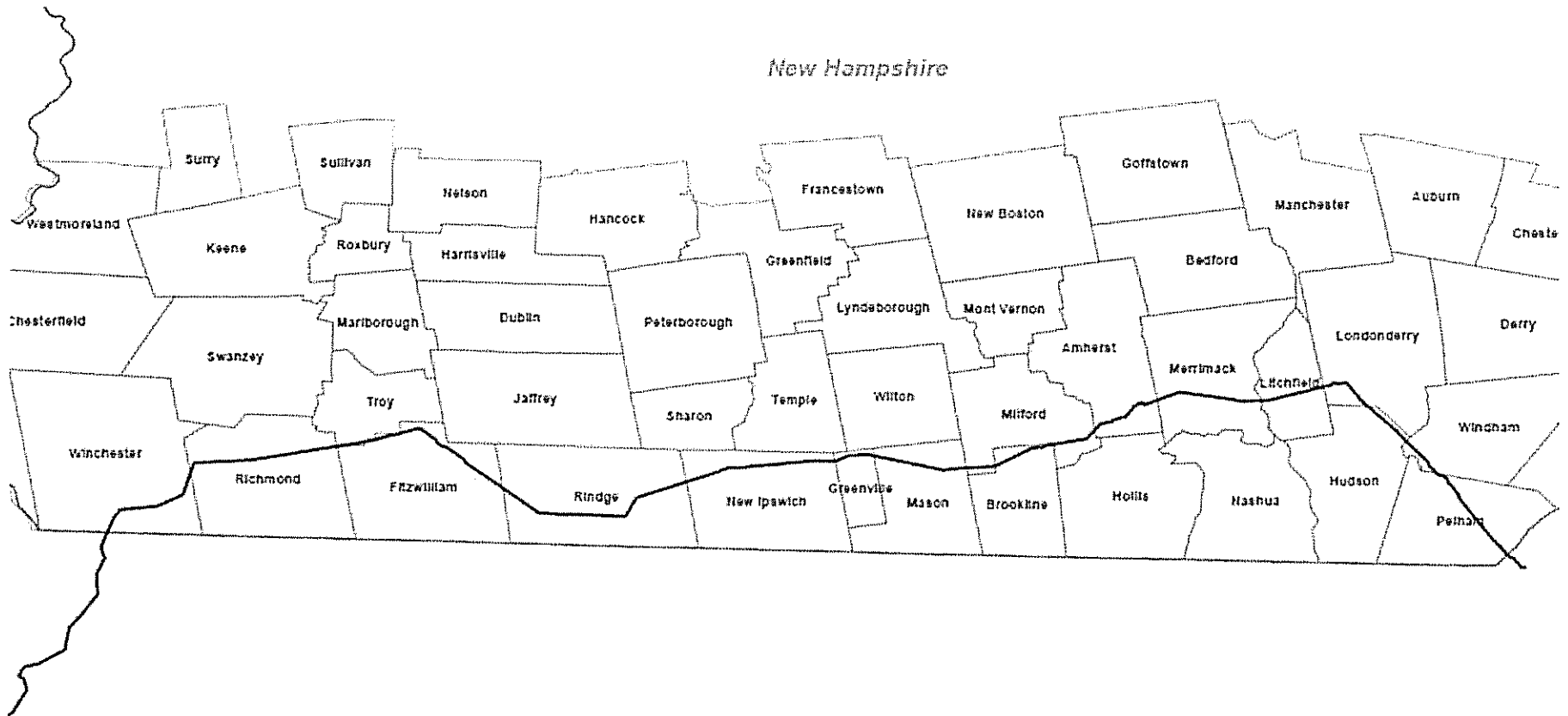
PRE-FILING ENVIRONMENTAL REVIEW PROCESS



The FERC Review Process (part 2)



NED Route in New Hampshire



NED Town's (NH)

NH Mainline

Cheshire County

- Fitzwilliam, NH
- Richmond, NH
- Rindge, NH
- Troy, NH
- Winchester, NH

Rockingham County

- Londonderry, NH
- Windham, NH

Hillsborough

County

- Amherst, NH
- Brookline, NH
- Greenville, NH
- Hudson, NH
- Litchfield, NH
- Mason, NH
- Merrimack, NH
- Milford, NH
- New Ipswich, NH
- Pelham, NH

Haverhill Lateral

- Salem, NH

Fitchburg Lateral

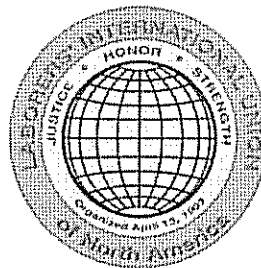
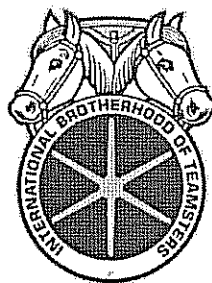
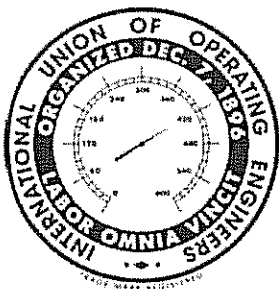
- Mason, NH

Project Benefits

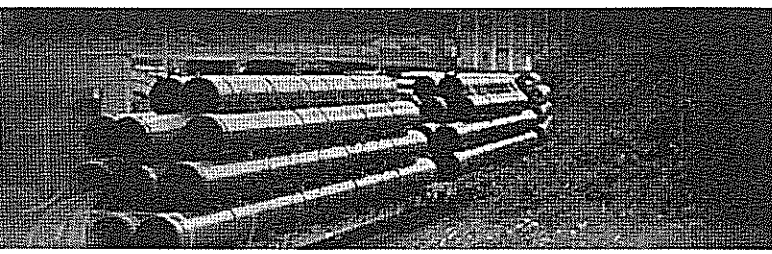
- **Tax Income:** An estimated additional \$11.1M to local taxing bodies in NH
- **Job Creation:** Estimated creation of 3,000 construction-related jobs
- **Economic Stimulus:** Economic benefits to surrounding areas during construction (retail, hospitality, etc.)
- **Energy Reliability:** Providing long-term energy reliability to the region.
- **Future Economic Growth:** Provide capacity for growth; expandable to meet future needs



Kinder Morgan signed a Memorandum of Agreement with the Laborers International Union North America (LIUNA) for the Northeast Energy Direct Project.

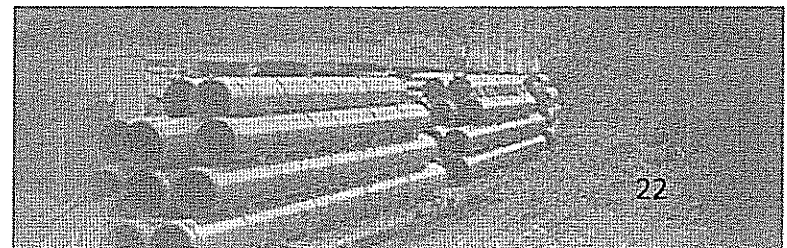
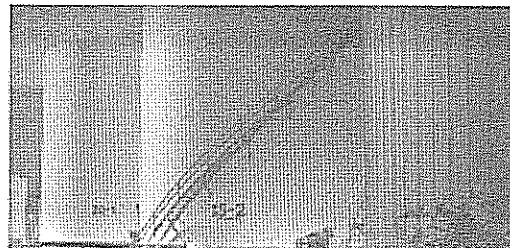
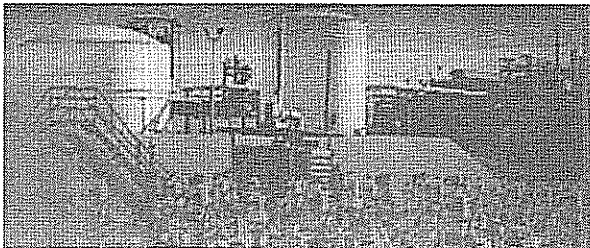


A Different Kind of
ENERGY COMPANY

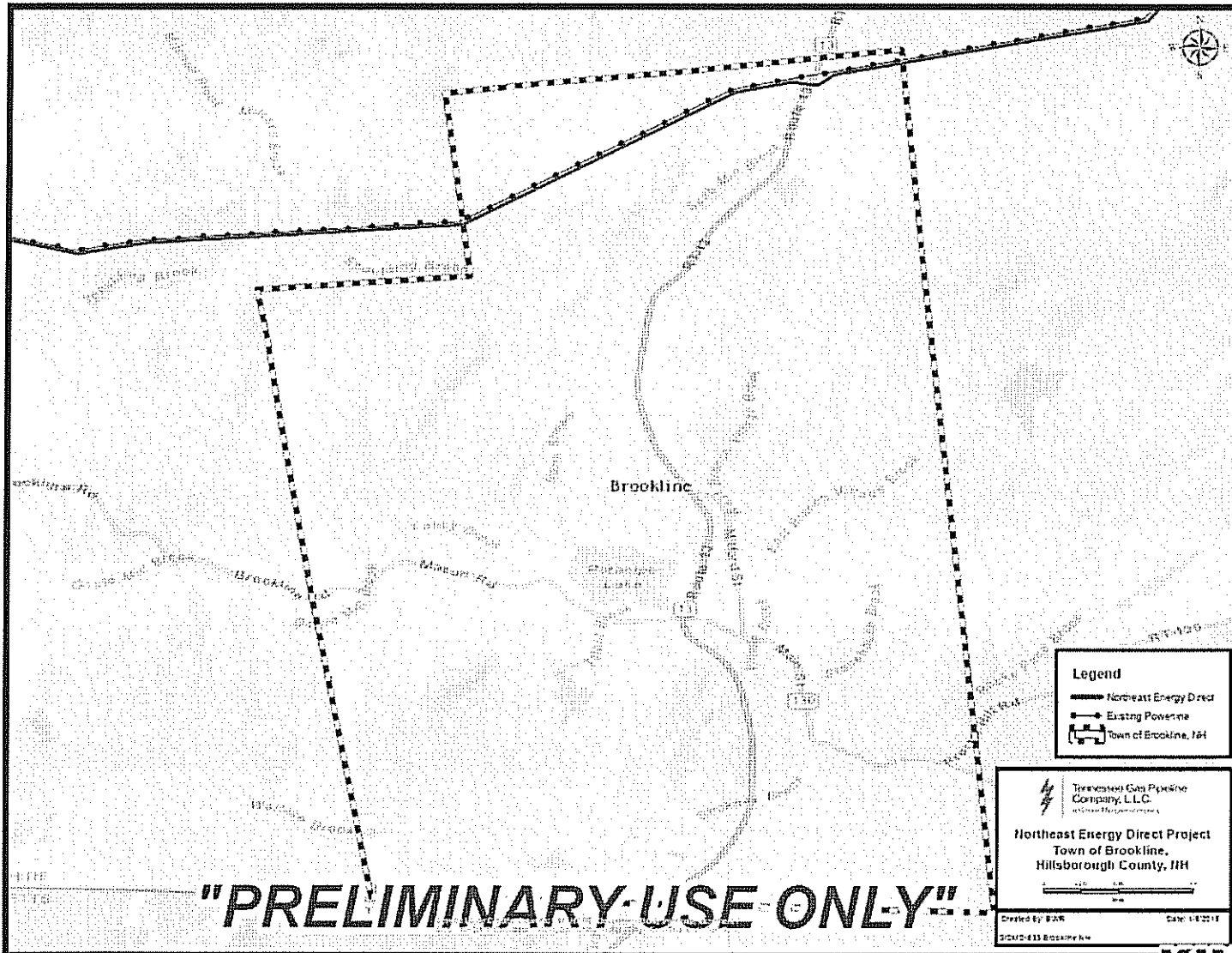


Pipeline Route in Winchester

KINDER  MORGAN



NED in Brookline, NH



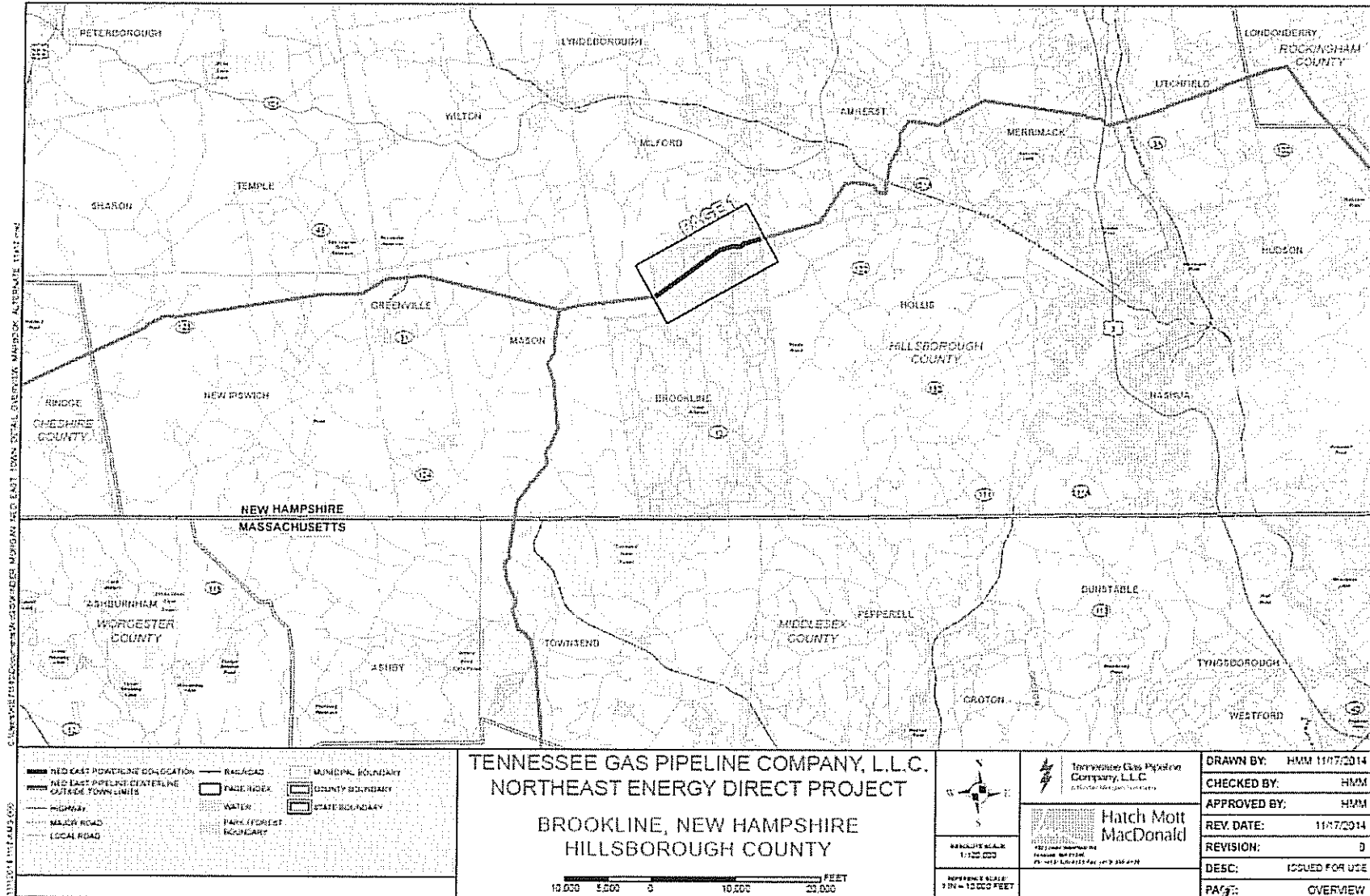
**NED in
Brookline:**

Mileage: 2.73 mi.

Landowners: 14

**Total Estimated
Taxes: \$440,000**

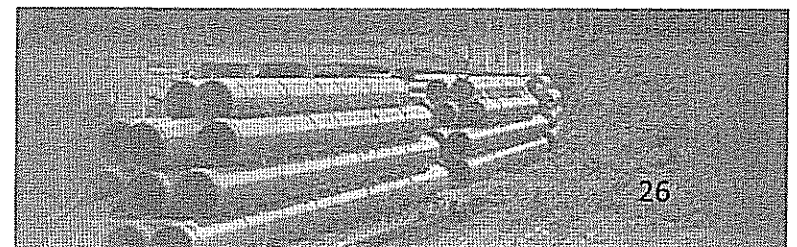
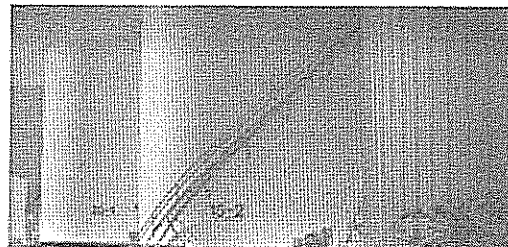
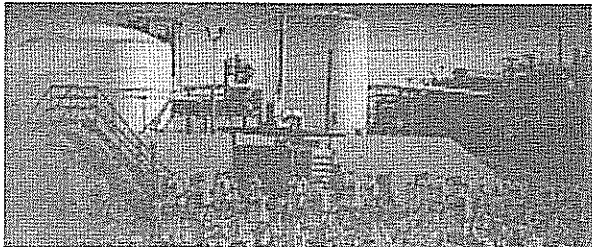
NED Maps: Brookline



A Different Kind of
ENERGY COMPANY

Next Steps

Our Commitment to Local Communities



New Hampshire Outreach

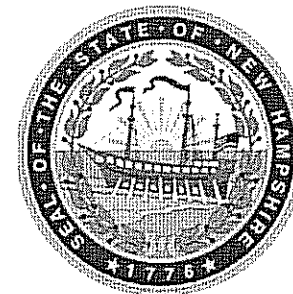
Town Contacts:

- Amherst, NH
- Brookline, NH
- Fitzwilliam, NH
- Greenville, NH
- Hudson, NH
- Litchfield, NH
- Londonderry, NH
- Mason, NH
- Merrimack, NH
- Milford, NH
- New Ipswich, NH
- Pelham, NH
- Richmond, NH
- Rindge, NH
- Salem, NH
- Troy, NH
- Winchester, NH
- Windham, NH

Project Outreach:

- Governor Maggie Hassan
- Pam Walsh, Governor's Chief of Staff
- Office of US Sen. Kelly Ayotte
- Office of US Sen. Jeanne Shaheen
- Office of US Rep. Carol Shea Porter
- Office of US Rep. Ann Kuster
- Meredith Hatfield, Director of the Office of Energy and Planning

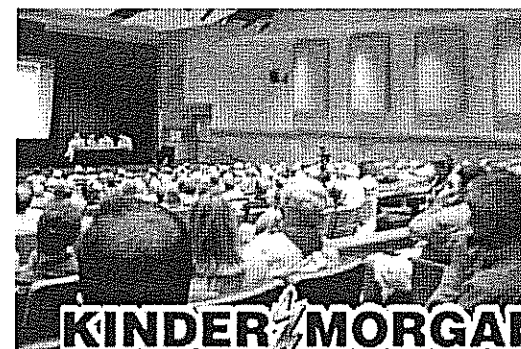
- Amy Ignatius, Chair of the Public Utilities Commission and Site Evaluation Committee
- Tom Burack, Commissioner of Environmental Services
- Jeff Rose, Commissioner of Resources and Economic Development
- Sen. Chuck Morse, Senate President
- Sen. Bob Odell
- Sen. Jeb Bradley
- Sen. Sharon Carson
- Sen. Sylvia Larsen, Senate Minority Leader
- Sen. Molly Kelly
- Sen. John Rausche
- Sen. Jeff Woodburn
- Rep. Terie Norelli, Speaker of the House
- Rep. Steve Shurtleff, House Majority Leader
- Rep. Mary Jane Walner, House Finance Chair
- Rep. David Borden, Chair, Science, Tech and Energy Committee
- Rep. Charles Townsend
- Rep. Jacqueline Cali-Pitts
- Rep. Robert Intone
- Rep. Beatriz Pastor
- Rep. William Baber
- Rep. Robert Backus
- Rep. Kenneth Grossman
- Rep. John Mann
- Rep. Ian Raymond
- Rep. Marjorie Shepardson
- Rep. Amanda Merrill
- Rep. Larry Rappaport
- Rep. Richard LeVasseur
- Rep. Lester Bradley
- Rep. Aboul Khan
- Rep. Herbert Vadney
- Rep. Harold Reilly
- Rep. James Devine
- Rep. David Murotake
- Rep. Mary Griffin
- New Hampshire Business and Industry Association.
- Greater Salem Chamber of Commerce
- Greater Londonderry Chamber of Commerce
- Merrimack Chamber of Commerce



Project Presentations to Date

We have conducted 59 public project presentations to impacted towns, counties and community groups.

- April 7, 2014 : Montague (MA)
- April 8, 2014: Dracut (MA)
- April 9, 2014: Ashburnham (MA)
- April 21, 2014: Hollis (NH)
- April 22, 2014: Plainfield (MA)
- April 23, 2014: Ashby (MA)
- May 12, 2014: Pepperell (MA)
- May 13, 2014: Warwick (MA)
- May 14, 2014: Tyngsborough (MA)
- June 4, 2014: Richmond (MA)
- June 5, 2014: North Reading (MA)
- June 23, 2014: Groton (MA)
- June 24, 2014: Tewksbury (MA)
- June 25, 2014: Townsend (MA)
- June 26, 2014: Bolton (MA)
- July 8, 2014: Erving (MA)
- July 9, 2014: Andover (MA)
- July 10, 2014: Wilmington (MA)
- July 15, 2014: Lunenburg (MA)
- July 22, 2014: Royalston (MA)
- July 23, 2014: Berlin (MA)
- July 24, 2014: Shelburne (MA)
- July 24, 2014: Franklin Regional Council of Governments (MA)
- August 5, 2014: Nashoba Valley Chamber of Commerce (MA)
- August 12, 2014: Athol (MA)
- August 14, 2014: Washington (MA)
- August 18, 2014: Boylston (MA)
- August 19, 2014: Northfield (MA)
- August 20, 2014: Northern Middlesex Council of Governments (MA)
- August 26, 2014: Dalton (MA)
- Sept. 2, 2014: Dunstable (MA)
- Sept. 16, 2014: Western Mass. EDC
- Sept. 17, 2014: Lenox Garden Club (MA)
- Sept. 18, 2014: Berkshire Regional Planning Commission (MA)
- Sept. 30, 2014: Pittsfield City Council (MA)
- Oct. 1, 2014: Northborough (MA)
- Oct. 1, 2014: Dracut & Tyngsborough (MA)
- Oct. 6, 2014: Winchendon (MA)
- Oct. 8, 2014: Salem, NH
- Oct. 30, 2014: Columbia County, NY
- Oct. 30, 2014: Berkshire Chamber of Commerce (MA)
- Nov. 21, 2014: Sanford, NY
- Jan. 5, 2015: Milford, NH
- Jan. 5, 2015: Londonderry, NH
- Jan. 5, 2015: Windham, NH
- March 23, 2015: Litchfield, NH
- March 23, 2015: Amherst, NH
- March 24, 2015: Mason, NH
- March 25, 2015: Rindge, NH
- March 25, 2015: New Ipswich, NH
- March 26, 2015: Pelham, NH
- March 26, 2015: Merrimack, NH
- March 30, 2015: Windham, NH
- April 27, 2015: Richmond, NH
- April 27, 2015: Fitzwilliam, NH
- April 28, 2015: Southern NH Planning Comm.
- April 28, 2015: Lanesborough, MA
- April 29, 2015: Salem, NH
- June 2, 2015: Winchester, NH



Community Open Houses

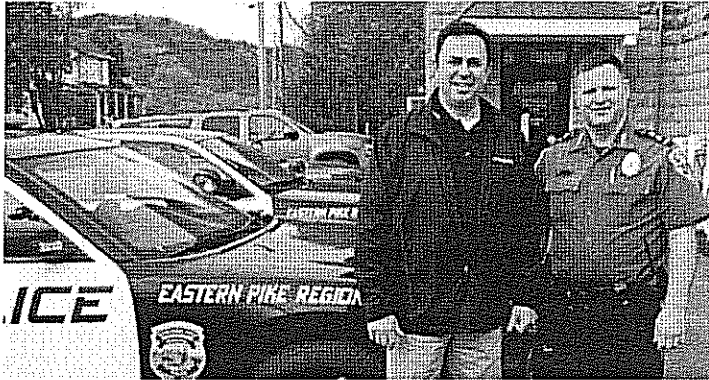
Kinder Morgan completed 20 Community Open House's along the NED proposed pipeline route in February and April 2015 which have been attended by over 3,400 people.

- 2/4/15: Winchester, NH Open House
- 2/5/15: Greenfield, MA Open House
- 2/10/15: Pittsfield, MA Open House
- 2/11/15: Farmington, CT Open House
- 2/12/15: New Scotland, NY Open House
- 2/17/15: Andover, MA Open House
- 2/18/15: Londonderry, NH Open House
- 2/19/15: Hudson, NH Open House
- 2/23/15: Rindge, NH Open House
- 2/24/15: Milford, NH Open House
- 2/25/15: Berlin, MA Open House
- 2/26/15: Fitchburg, MA Open House
- 4/6/15: Schoharie, NY Open House
- 4/7/15: Davenport, NY Open House
- 4/8/15: Sidney, NY Open House
- 4/9/15: Sanford, NY Open House
- 4/13/15: Schodack, NY Open House
- 4/14/15: Richmondville, NY Open House
- 4/15/15: New Milford, PA Open House
- 4/16/15: Towanda, PA Open House



Kinder Morgan in the Community

2014 Donation to Eastern Pike Regional Police Department to support national gas conversion of squad cars.



In 2013, Tennessee Gas Pipeline donated to the Milford Beach in the Delaware Gap National Recreation Area to keep it open for the summer.



In cooperation with the Berkshire Natural Resource Council, Tennessee Gas Pipeline provided funding for the Olivia's Overlook near Lenox, MA.



In 2013, Parkway Pipeline supported the Collins, MS Fire Department.

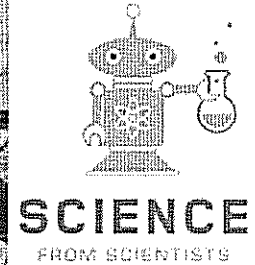
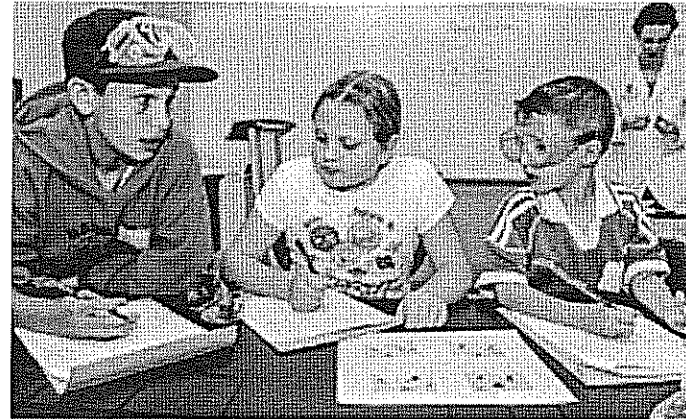
In 2013, Kinder Morgan donated 3,000 tree saplings to elementary schools in seven counties across NJ and PA to celebrate Arbor Day.



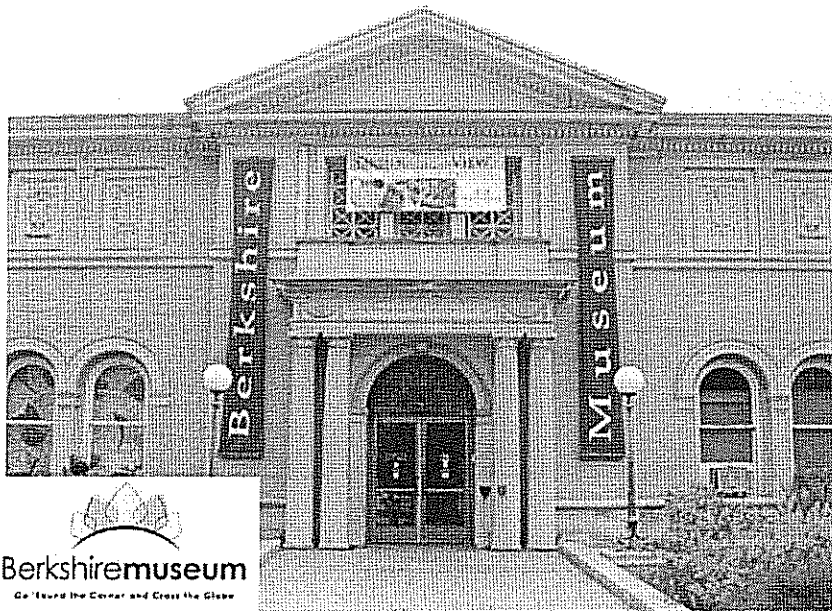
KINDER MORGAN

Kinder Morgan Foundation

- The Kinder Morgan Foundation funds programs that promote the academic and artistic interests of young people in the many cities and towns across North America where Kinder Morgan operates.



Science from Scientists, Inc., Boston, MA



Berkshire Museum, Pittsfield, MA



Please Touch Museum, Philadelphia, PA

www.kindermorgan.com/community

KINDER MORGAN

Kinder Morgan Contact Information

Project Website:

www.kindermorgan.com/business/gas_pipelines/east/neenergydirect/

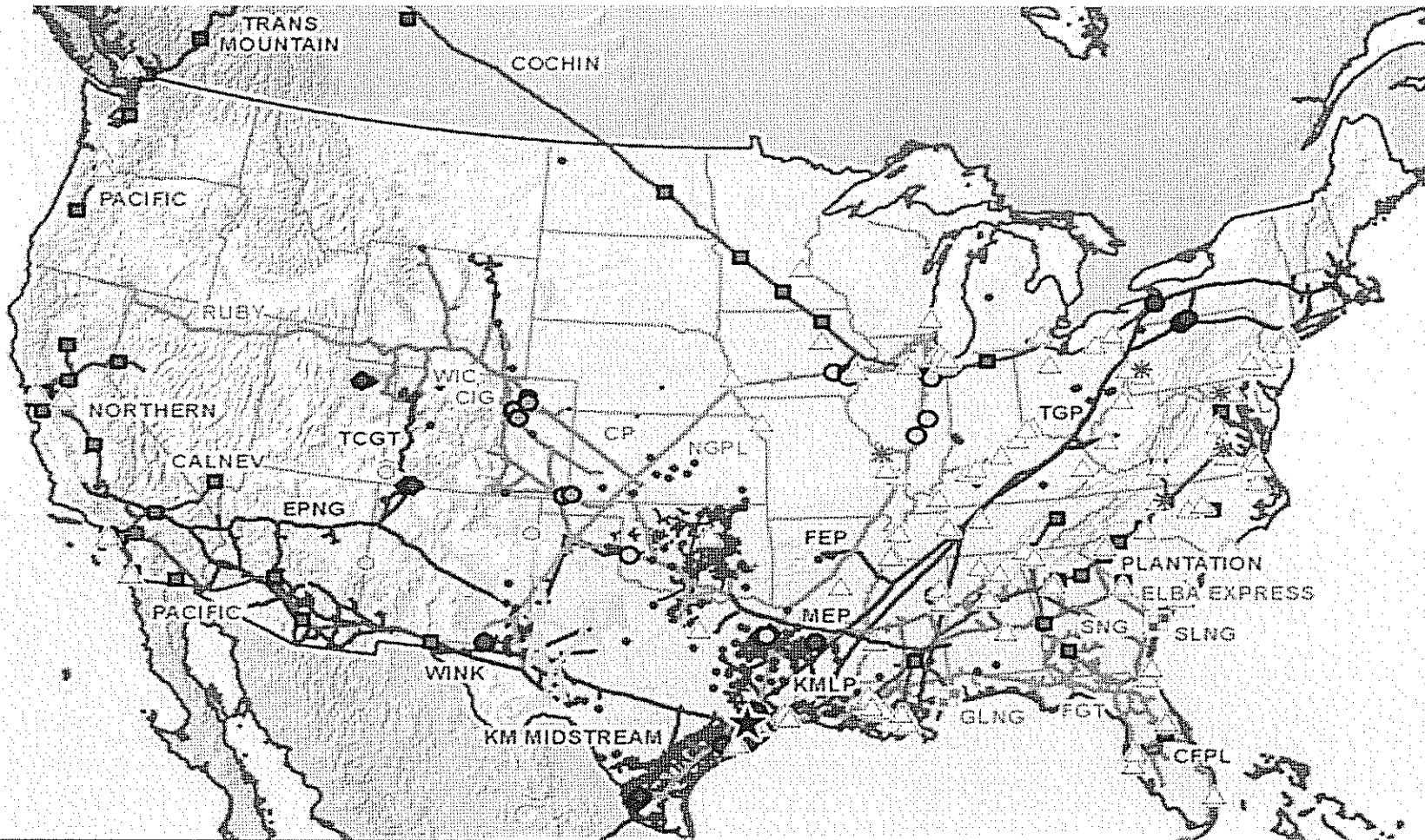
Public Affairs/Project Outreach

- Allen Fore
630-725-3044
allen_fore@kindermorgan.com

Public Affairs:

- Lucas Meyer
568-2511
lucasmeyer@gmail.com

Kinder Morgan Asset Map



— KMP GAS PIPELINES	— EPB GAS PIPELINES	△ KMP TERMINALS	— KMP CO2 PIPELINES
● KMP GAS STORAGE	● EPB GAS STORAGE	— KMP PRODUCTS PIPELINES	● KMP CO2 SOURCE FIELDS
◆ KMP GAS PROCESSING	■ EPB LNG TERMINALS	■ KMP PRODUCTS PIPELINES TERMINALS	▲ KMP CO2 OIL SPILLS
• KMP GAS TREATERS	— KMI GAS PIPELINES	* KMP TRANSMIX FACILITIES	
	○ KMI GAS STORAGE	— KMP PETROLEUM PIPELINES	
	■ KMI LNG TERMINALS	■ KMP PETROLEUM PIPELINES TERMINALS	

KINDER MORGAN

Proposed Northeast Energy Direct Route

