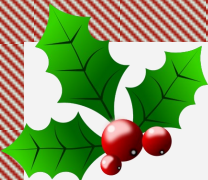


# Safety Educator

# DECEMBER 2017



K9 Molly



INSIDE THIS ISSUE:

- Christmas Tree Safety 2
- Candle Safety 2
- Home for Holidays 3
- Keep Kids Safe Holiday
- Message From Marshal Degnan 4

## WINTER HOLIDAY SAFETY

Winter holidays are a time for families and friends to get together, but that also means a greater risk for fire. Following a few simple tips will ensure a happy and fire-safe holiday season.

### HOLIDAY DECORATING

- ▶ Be careful with holiday decorations. Choose decorations that are **flame resistant** or **flame retardant**.
- ▶ Keep lit candles away from decorations and other things that can burn.
- ▶ Some lights are only for indoor or outdoor use, but not both.
- ▶ Replace any string of lights with worn or broken cords or loose bulb connections. **Read manufacturer's instructions** for number of light strands that can be connected together.
- ▶ Use clips, not nails, to hang lights so the cords do not get damaged.
- ▶ Keep decorations away from windows and doors.

### HOLIDAY ENTERTAINING

- ▶ Test your smoke alarms and tell guests about your home fire escape plan.
- ▶ Keep children and pets away from lit candles.
- ▶ Keep matches and lighters up high in a locked cabinet.
- ▶ Stay in the kitchen when cooking on the stovetop.
- ▶ Ask smokers to smoke outside. Remind smokers to keep their smoking materials with them so young children do not touch them.
- ▶ Provide large, deep ashtrays for smokers. Wet cigarette butts with water before discarding.



## DECEMBER: SAFE USE OF CANDLES—HOLIDAY SAFETY

By Alivia Walker, Disnard Elementary School, Claremont



Alivia would like to remind readers to blow out lit candles before going to bed or leaving the room so that a fire doesn't happen. Thank you Alivia for this important holiday safety reminder!

## CHRISTMAS TREES: Festive, Fun and FLAMMABLE



As you deck the halls this holiday season, be fire smart. A small fire that spreads to a Christmas tree can grow large very quickly. Follow these recommended safety tips.

### Picking the Tree

- Choose a tree with fresh, green needles that do not fall off when touched.

### Placing the Tree

- Before placing the tree in the stand, cut 2" from the base of the trunk.
- Make sure the tree is at least three feet away from any heat source, like fireplaces, radiators, candles, heat vents or lights.
- Make sure the tree is not blocking an exit.
- **Add water to the tree stand daily.**



### Lighting the Tree

- Use lights that have the label of a recognized testing laboratory. Some lights are only for indoor or outdoor use.
- Replace any string of lights with worn or broken cords or loose bulb connections. Read manufacturer's instructions for number of light strands to connect.
- Never use lit candles to decorate the tree.
- Always turn off Christmas tree lights before leaving home or going to bed.

TREE Safety Tips:



Prevent Holiday  
Tree Fires:



## CANDLE SAFETY



- Blow out all candles when you leave the room or go to bed. Avoid the use of candles in the bedroom and other areas where people may fall asleep.
- Keep candles at least 12 inches away from anything that could burn.
- Use candle holders that are sturdy, and won't tip over easily.



- Put candle holders on a sturdy, uncluttered surface.
- Light candles carefully. Keep your hair and any loose clothing away from the flame.
- Don't burn a candle all the way down — put it out before it gets too close to the holder or container.
- Never use a candle if oxygen is used in the home.
- Have flashlights and battery-powered lighting ready to use during a power outage. Never use candles.

Learn more on Candle Safety

LEARN MORE



## HOME FOR THE HOLIDAYS

Staying home and hosting friends and family this holiday season? Be sure to take a moment to double check, or create, your home emergency preparedness plan and then **SHARE** with visitors.

**TEST SMOKE ALARMS.** If you didn't change all the batteries on Nov

5th, PLEASE take a moment to do so now.

**CARBON MONOXIDE ALARMS** should be properly placed and working according to manufacturer's directions.

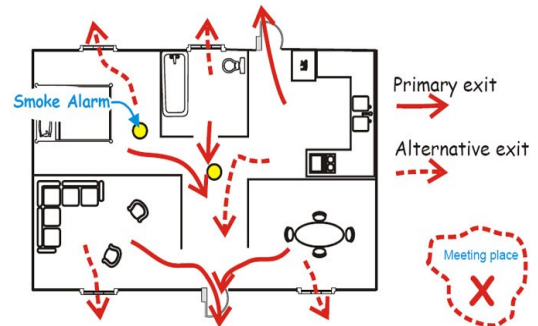
Create an **ESCAPE PLAN** with **TWO WAYS OUT OF EVERY ROOM.** Hang it in a central location and practice with family members and visitors, especially those spending the night.

Establish an Outdoor **MEETING PLACE.**

Should an alarm sound, **GET OUT** and **STAY OUT.** Close all doors behind you. Do not return to the home for any reason.

**REVIEW** the use of 9-1-1 should an emergency arise and help be needed.

**Traveling for the holidays?** No matter where you are staying be sure to take a moment and **review escape plans and safety measures** for that type of home/occupancy. **Keep your family SAFE this holiday season!**



[LEARN MORE](#)

**SAFE  
KIDS  
WORLDWIDE**

## KEEP KIDS SAFE THIS HOLIDAY SEASON!

It's that time of year again when we enjoy festive meals with family and friends, deck our halls with colorful decorations and listen to squeals of delight as our children open their brightly-wrapped presents. To help ensure your kids have fun and stay safe this holiday, here are a few tips to remember.

1. Natural trees look beautiful and smell great, but if they're not watered regularly, needles can dry out and pose a potential fire hazard. Make sure your tree has plenty of water by checking it regularly.
2. Keep holiday candles at least 12 inches away from anything that can burn, and don't forget to blow them out when you leave the room or before you go to sleep.
3. Consider your child's age when purchasing a **toy or game** this holiday season. It's worth a second to read the instructions to make sure the gift is just right
4. Keep a special eye on small pieces, including **button batteries** that may be included in electronic toys. While these kinds of games are great for older kids, they can pose a potential danger for younger, curious siblings.
5. Kids love to reach, so to **prevent burns** from hot holiday food or liquid spills, simply use the back burner of your stove and turn pot handles away from the edge.
6. Kids are curious and will want to play with the ornaments on the tree, so you might as well prepare. Move the ornaments that are breakable or have metal hooks towards the top of the tree. That makes room at the bottom for the ones that are safer for young kids.



[LEARN MORE!](#)



**J. William Degnan**  
**NH State Fire Marshal**



**NH STATE FIRE MARSHAL**  
Department of Safety  
33 Hazen Drive  
Concord, NH 03305  
Phone: (603)223-4289  
Arson Hotline:  
1-800-400-3526  
EMAIL: [FMO@dos.nh.gov](mailto:FMO@dos.nh.gov)

**PUBLIC EDUCATION DIVISION:**

K9 District Chief:

Stacey Dubois

**EDUCATORS:**

Mary MacCaffrie

Amy McLaughlin

Sheryl Nielsen

**Message from Fire Marshal Degnan:**

Tis the season to deck the halls with your families safety in mind! While we all agree it is fun to decorate for the winter holidays, here are a few tips for safer holidays. Many of the festive decorations increase the possible risk of a fire happening within our home. As you deck the halls this season, please be fire smart.

- ▶ Be careful with holiday decorations. Choose decorations that are flame resistant or flame retardant.
- ▶ Replace any string of lights with worn or broken cords or loose bulb connections. Read manufacturer's instructions for number of light strands that can be connected together.
- ▶ Fortunately, live Christmas tree fires are not common. When they do occur, they are rapid and dangerous. On average, 1 of every 31 reported home Christmas tree fires resulted in death. Make sure your tree is well watered and at least 3 feet away from heat sources like fireplaces, radiators, space heaters, candles or heat vents.

Taking a moment to ensure that your home is fire and life safe by properly checking any possible hazardous situations that could be present is essential for a safe holiday season. This interactive newsletter contains not only valuable information on how to do this, but excellent video links to enhance your understanding on the topics provided. Should you have any questions or concerns please do not hesitate to contact your local fire department or the State Fire Marshal's Office. ***We wish you and yours a very safe and memorable 2017 Holiday Season!***

*J. William Degnan*  
J. William Degnan  
NH State Fire Marshal



**Student & Parent Approved Websites**

**K9 MOLLY** encourages students to disconnect and enjoy safe outdoor play. However, this dog understands that sometimes the weather just doesn't cooperate. So when it comes to computer time...



try one of these family fun fire and life safety websites! Just click a picture below to open the link and play. Have fun and be safe!



Any questions or comments regarding this newsletter please feel free to contact:

**Sheryl Nielsen**

Public Education Specialist

Youth Firesetter Intervention & Education

[Sheryl.Nielsen@dos.nh.gov](mailto:Sheryl.Nielsen@dos.nh.gov) 603-223-4289

Find Us on the Web:

[www.nh.gov/safety/divisions/firesafety/](http://www.nh.gov/safety/divisions/firesafety/)

